



TAM Ceramics

HIGH PURITY ENGINEERED POWDERS

Friction Report

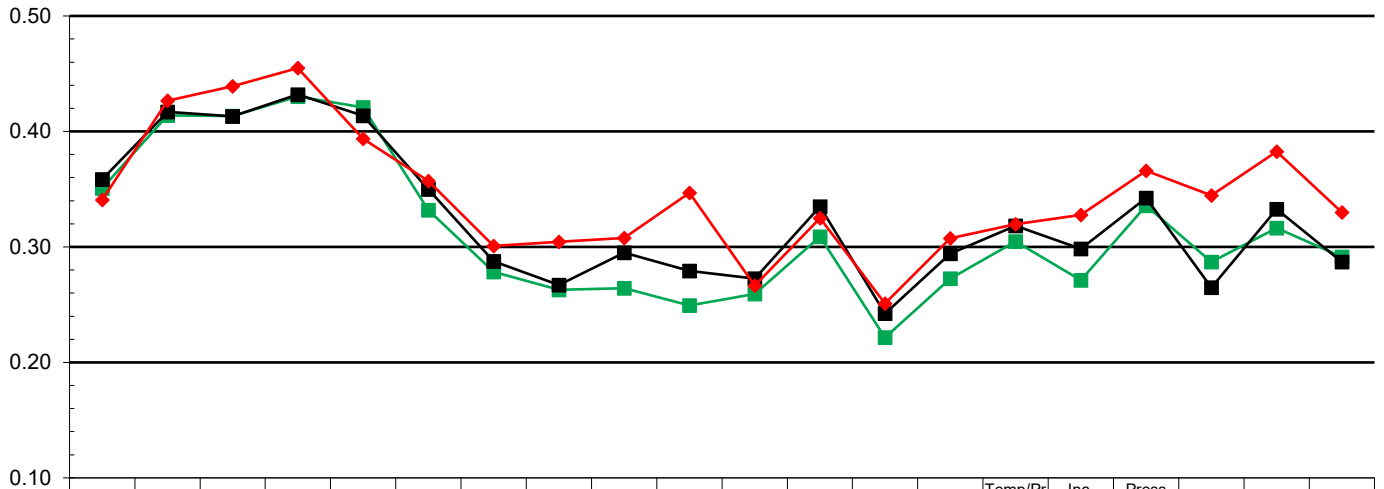
Zirconia

SAE J2522 – 2015 Honda City
Test Inertia: 55.9 kg•m³

Formulation

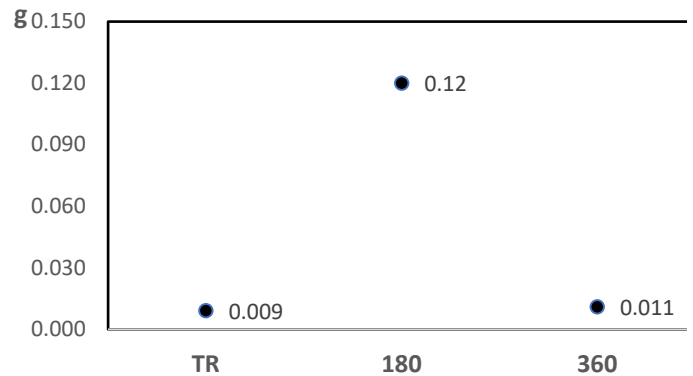
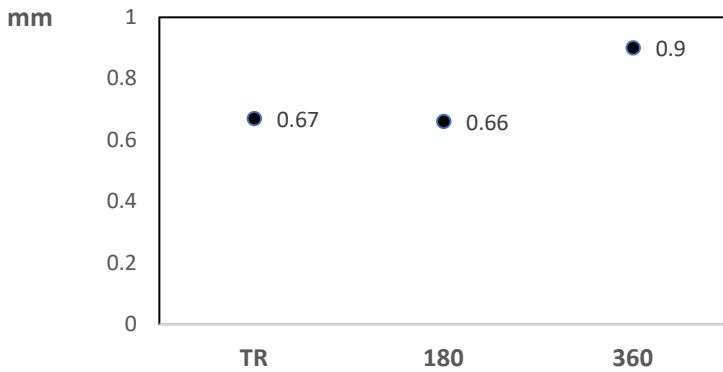
	Vol %
Pulp	5.00
Fiber	6.50
Potassium Titanate	14.50
Resin	15.00
Lubricant	12.50
Other organics	16.00
Barytes	25.50
Zirox TR/180/360	5.00

Friction Properties



Wear Properties

Pad Wear



Disc Wear

